

Estimated 50 pallets / 1,200 boxes

Row 1 – Mixed Occasion Packaging (gift bags/wrapping/ribbon/gift tags)

- Approx. 180 boxes
- Approx. 12 pallets



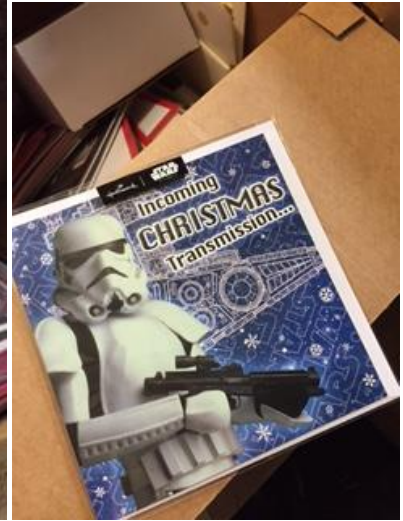
Row 2 – Non-Christmas Gifts

- Approx. 153 boxes
- Approx. 9 pallets



Row 3 – Non-Christmas Cards

- Approx. 280 boxes
- Approx. 8 pallets



Row 4 – Christmas Cards

- Approx. 220 boxes
- Approx. 6 pallets



Row 5 - Christmas Gifts

- Approx. 90 boxes
- Approx. 4 pallets



Row 6 – Non-Christmas Gifts (continued)

- Approx. 44 boxes
- Approx. 2.5 pallets



Row 7 – Mixed Occasion Packaging (continued)

- Approx. 50 boxes
- Approx. 3 pallets

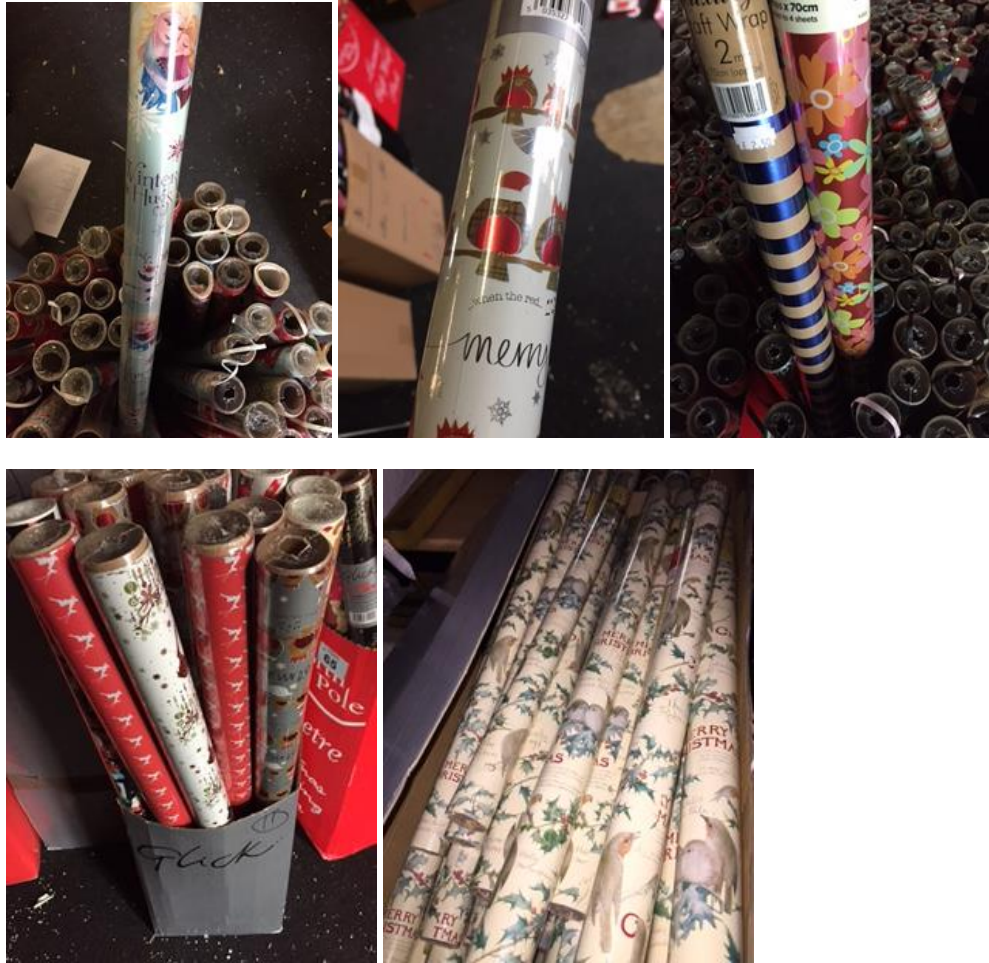




Row 8 – Wrapping Paper

- Approx. 110 boxes
- Approx. 4.5 pallets





Row 9 – Christmas Decoration (trees/snow globes)

- Approx. 47 boxes
- Approx. 1 pallet



Lesser and Pavey Stock – Mixed Gifts

- Approx. 30 boxes
- Approx. 1 pallet

